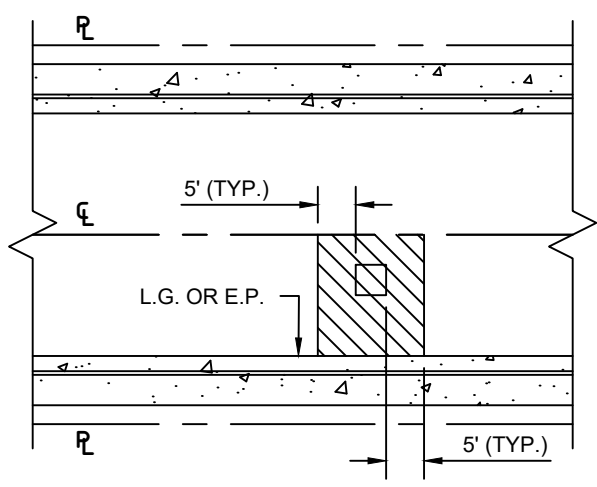


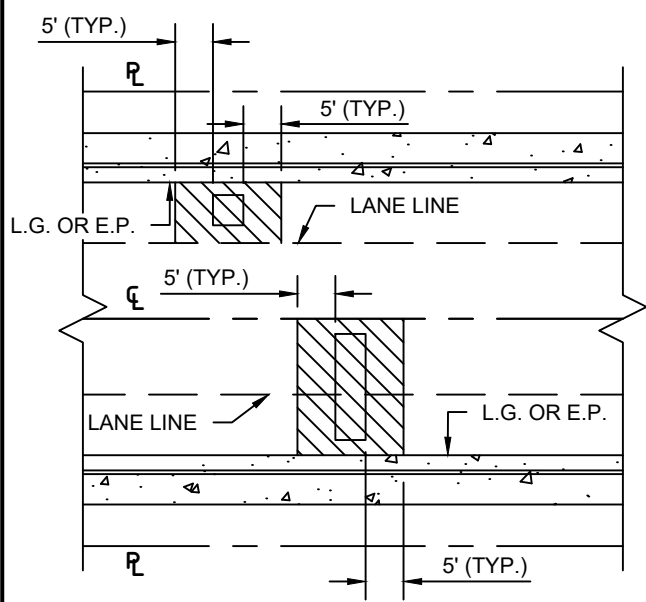
**BORE PIT AT CENTERLINE**

N.T.S.



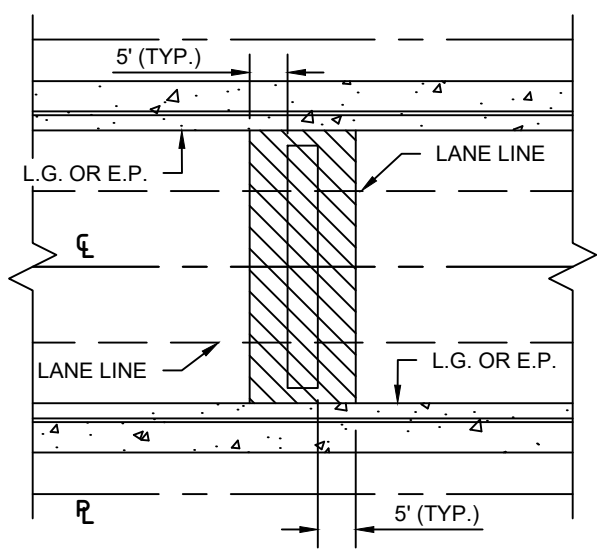
**BORE PIT IN TRAVEL LANE  
(SINGLE LANE)**

N.T.S.



**TRENCH BEFORE CENTERLINE**

N.T.S.



**TRENCH ACROSS CENTERLINE**

N.T.S.

**GENERAL NOTES:**

1. SLURRY SEAL SHALL BE POLYMER/LATEX MODIFIED TYPE II FOR RESIDENTIAL STREETS; AND TYPE II MICRO-SURFACE FOR COLLECTOR AND ARTERIAL STREETS, PER CURRENT CITY STANDARD SPECIFICATIONS.
2. HMA SHALL BE 3/4-INCH TYPE A AND SHALL MEET CURRENT CITY STANDARD SPECIFICATIONS. ANY EXISTING FABRIC/GEOTEXTILE SHALL BE REPLACED IN-KIND. ADDITIONAL MITIGATION WORK MAY BE REQUIRED BY THE CITY ENGINEER IF NECESSARY TO MAINTAIN PAVEMENT INTEGRITY.
3. REFER TO DETAIL SS1 FOR TRENCH BACKFILL

**ABBREVIATIONS**

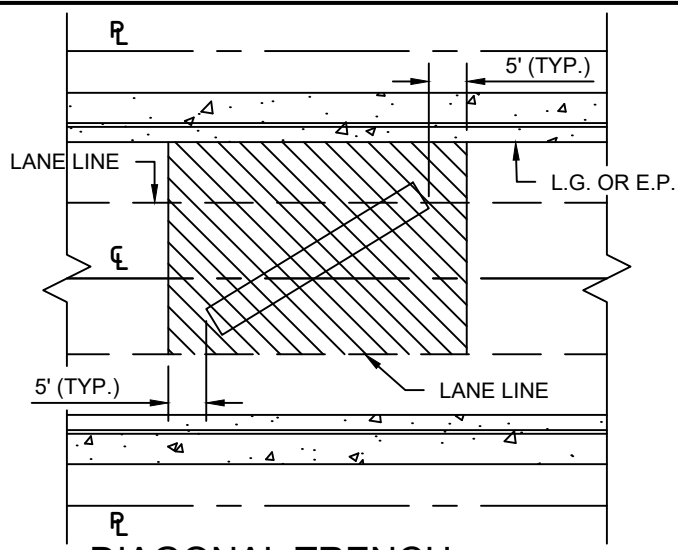
- $\text{P}$  PROPERTY LINE
- $\text{C}$  CENTERLINE
- L.G. LIP OF GUTTER
- E.P. EDGE OF PAVEMENT
- TYP. TYPICAL
- N.T.S. NOT TO SCALE

**LEGEND**

- BORE PIT
- UTILITY TRENCH
- SLURRY, MICRO-SURFACE, GRIND & 2.5" OVERLAY OR AS DIRECTED BY THE CITY INSPECTOR, DEPENDING ON SMOOTHNESS AND QUALITY OF THE PATCH JOB

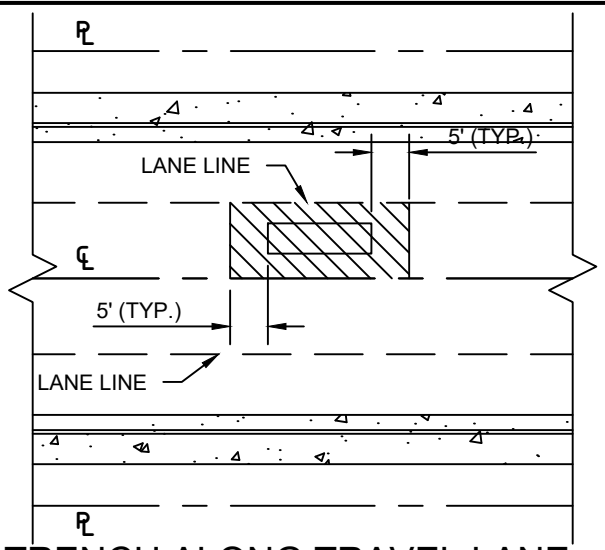


<b>CITY OF FAIRFIELD</b>	
DEPARTMENT OF PUBLIC WORKS	
DETAIL NAME: PAVEMENT MITIGATION ON MORATORIUM STREETS	
APPROVED BY	<b>S22.1</b>
CITY ENGINEER R.C.E. 74795	
DATE: OCTOBER 2020	



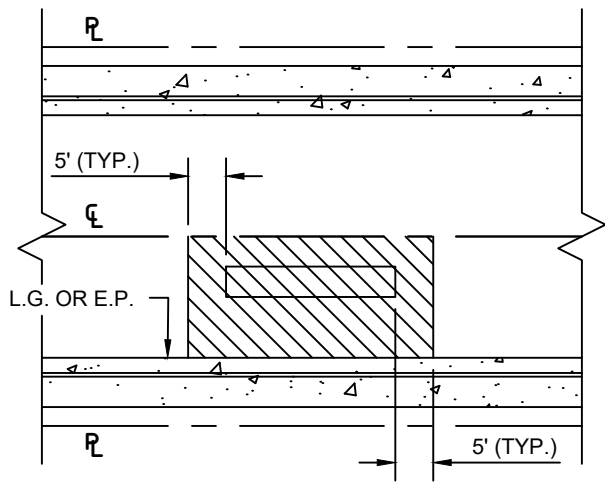
**DIAGONAL TRENCH**

N.T.S.



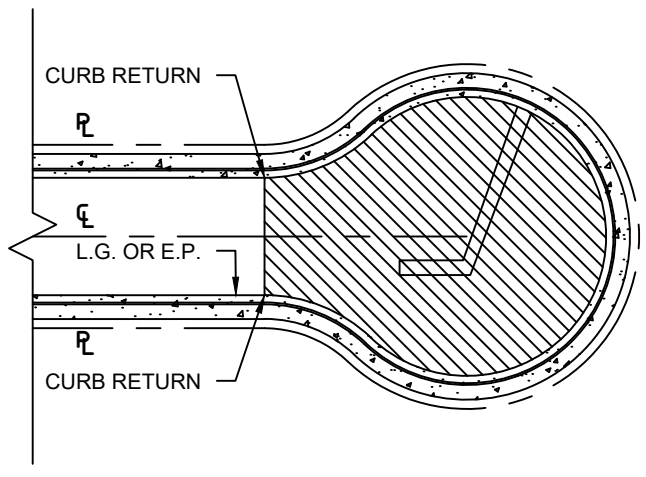
**TRENCH ALONG TRAVEL LANE (MULTI-LANE)**

N.T.S.



**TRENCH ALONG TRAVEL LANE (SINGLE LANE)**

N.T.S.



**CUL-DE-SAC OR EXPANDED CORNER**

N.T.S.


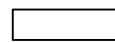

**GENERAL NOTES:**

1. SLURRY SEAL SHALL BE POLYMER/LATEX MODIFIED TYPE II FOR RESIDENTIAL STREETS; AND TYPE II MICRO-SURFACE FOR COLLECTOR AND ARTERIAL STREETS, PER CURRENT CITY STANDARD SPECIFICATIONS.
2. HMA SHALL BE 3/4-INCH TYPE A AND SHALL MEET CURRENT CITY STANDARD SPECIFICATIONS. ANY EXISTING FABRIC/GEOTEXTILE SHALL BE REPLACED IN-KIND. ADDITIONAL MITIGATION WORK MAY BE REQUIRED BY THE CITY ENGINEER IF NECESSARY TO MAINTAIN PAVEMENT INTEGRITY.
3. REFER TO DETAIL SS1 FOR TRENCH BACKFILL

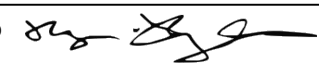
**ABBREVIATIONS**

- |        |                  |
|--------|------------------|
| ℙ      | PROPERTY LINE    |
| ℄      | CENTERLINE       |
| L.G.   | LIP OF GUTTER    |
| E.P.   | EDGE OF PAVEMENT |
| TYP.   | TYPICAL          |
| N.T.S. | NOT TO SCALE     |

**LEGEND**

- |   |  |
|---|--|
|  | BORE PIT   |
|  | UTILITY TRENCH   |
|  | SLURRY, MICRO-SURFACE, GRIND & 2.5" OVERLAY OR AS DIRECTED BY THE CITY INSPECTOR, DEPENDING ON SMOOTHNESS AND QUALITY OF THE PATCH JOB |



<b>CITY OF FAIRFIELD</b>	
DEPARTMENT OF PUBLIC WORKS	
DETAIL NAME: PAVEMENT MITIGATION ON MORATORIUM STREETS	
APPROVED BY: 	<b>S22.2</b>
CITY ENGINEER R.C.E. 74795	
DATE: OCTOBER 2020	